



Drain Trays / Bar Drainer

Model: _____

Item #: _____ Quantity: _____

Project: _____



- **Pan:**
20 gauge 304 series stainless steel.
- **Insert:**
20 gauge 304 series stainless steel.
- **Plumbing:**
1/2" IPS drain connection.

Drain Trays

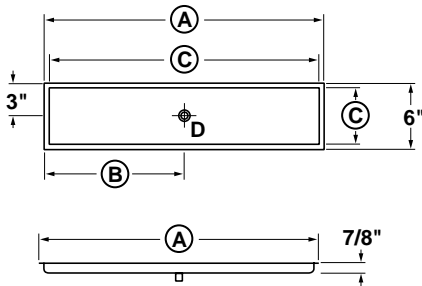
Approved By: _____

Model: _____ Item #: _____ Quantity: _____ Project: _____

Drain Trays

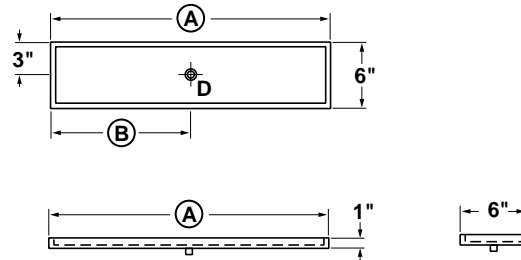
Flanged Drop-In

Model Numbers	Overall Length (A)	Left Side to Drain (B)	Cut-Out Size (C)	Weight lbs.
31-100	9"	4 1/2"	5 3/4" x 4 3/4"	4
31-101	9"	n/a	5 3/4" x 4 3/4"	4
31-102	13"	6 1/2"	11 3/4" x 4 3/4"	5
31-103	13"	n/a	11 3/4" x 4 3/4"	5
31-106	25"	12 1/2"	23 3/4" x 4 3/4"	7
31-107	25"	n/a	23 3/4" x 4 3/4"	7
31-110	37"	18 1/2"	35 3/4" x 4 3/4"	9
31-111	37"	n/a	35 3/4" x 4 3/4"	9



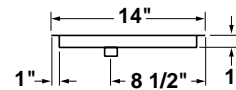
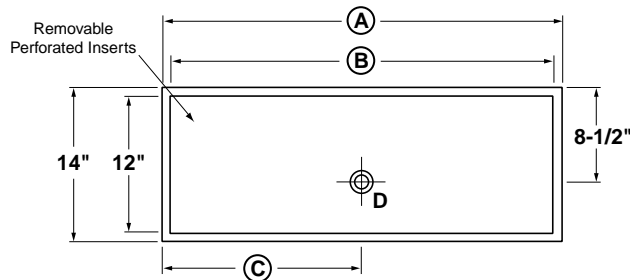
Countertop

Model Numbers	Overall Length (A)	Left Side to Drain	Weight lbs.
31-200	9"	4 1/2"	4
31-201	9"	n/a	4
31-202	13"	6 1/2"	5
31-203	13"	n/a	5
31-206	25"	12 1/2"	7
31-207	25"	n/a	7
31-210	37"	18 1/2"	9
31-211	37"	n/a	9



Bar Drainers

Model Numbers	Length (A)	Width	Inside Dimension (B)	Drain Location (C)	Weight lbs.
KR-D24	2'-0"	14"	22 1/2"	12"	35
KR-D36	3'-0"	14"	34 1/2"	18"	45



Mechanical Requirements:

1/2" IPS Drain Connection.

Approved By: _____

Due to our commitment to continued product improvement, specifications are subject to change without notice.